

MIRROR MAZES

The Lost City of Atlantis

Birmingham Sea Life Centre, England

Mirror mazes create seemingly endless underwater spaces. Tanks of living fish add movement and interest.



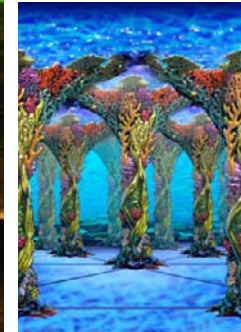
Carved Pillars and a Giant Head litter the sea floor in the sunken city of Atlantis.



(c) 2008, Adrian Fisher all rights reserved



(c) 2008, Adrian Fisher all rights reserved



A coral reef has established itself among the ancient ruins.



AFC085426, WEBSITE, Mirror Mazes, Birmingham Sea Life Centre, 5 Sep 2008

adrianfisherdesignltd



Adrian Fisher Design Ltd
Portman Lodge
Durweston
Dorset DT11 0QA
England

Phone within UK: 01258 458845
Phone internationally: +44 1258 458845
Adrian's Cell: +44 (0) 7712 172 577
Marie's Cell: +44 (0) 7712 018 916

Email: sales@adrianfisherdesign.com
Web: www.adrianfisherdesign.com